

# Verdegro 100 K TMA

med lyspiltavle iht. gældende regler

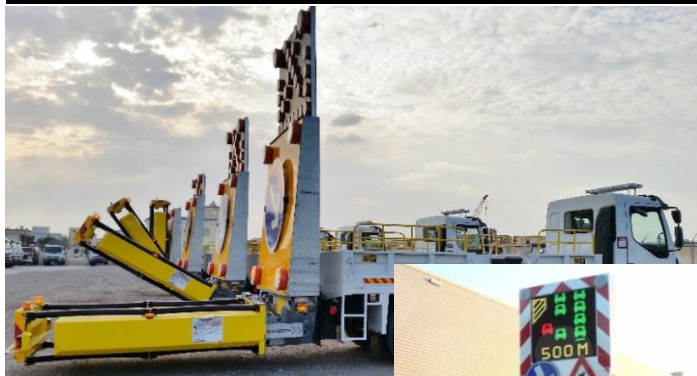
- sikkerhed for bilister og medarbejderne på vejen.



## About the product

A UNIQUE DESIGN PROVEN QUALITY

European producer of a Truck Mounted Attenuator according to the NCHRP-350. With optional tests TL-3-52 and TL-3-53 and the optional UK impact test (TD 49/07). The product is approved by accredited testlab's!



## Product USP

**Tested according the NCHRP-350 TLII 70 kph  
Used with a 3500 kg shadow vehicle  
2000P tests wit a 2000 Kg US pick-up truck**

## TECHNICAL SPECIFICATIONS

- Personalized with two tone paint job
- 2.5 ton van up to 9 ton truck
- Hydraulic rotating system included
- Optional subframe for mounting between chassis and cargofloor on request
- Energy absorption aluminum moisture proof cartridge
- Energy absorption replacable aluminum tubes
- First impact aluminum replaceable hood
- Reflective foil according your specs
- Weight approx. 280 Kg



**Ramudden A/S**

Tlf. 70 20 20 94 · ramudden.dk · salg@ramudden.dk  
Finervej 7, 4621 Gadstrup · Industrivej 2, 7000 Fredericia